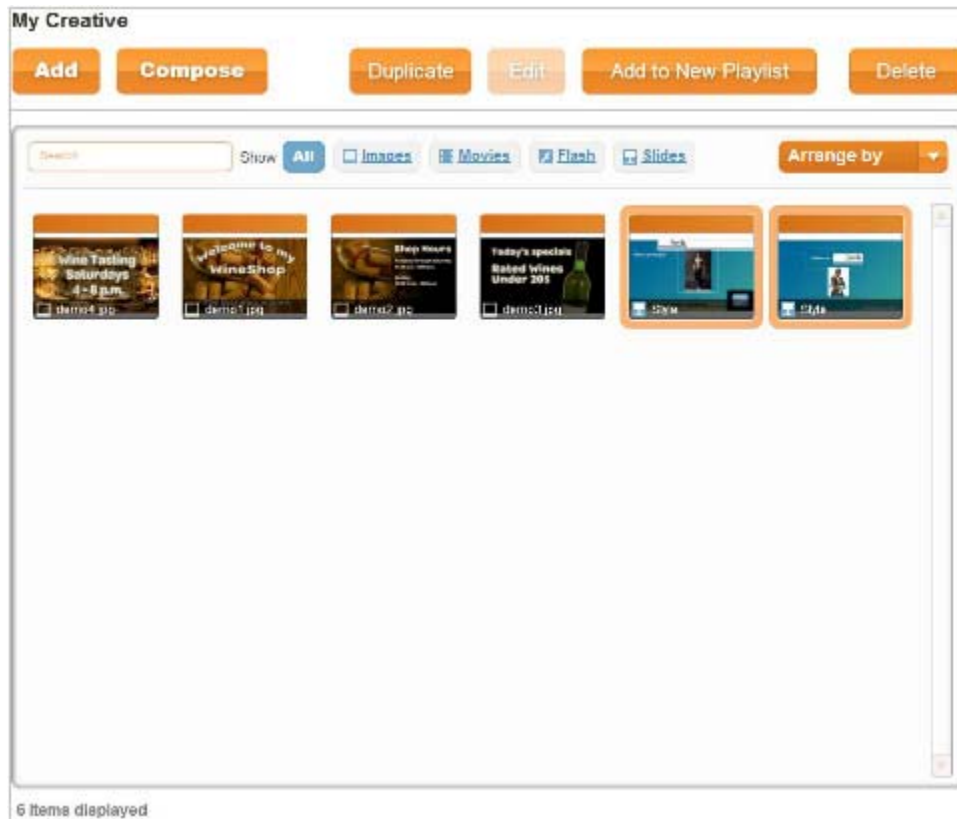


Creating Playlists

After you have created a number of digital channel images, you will want to collect them into a playlist so that they can be broadcast together.

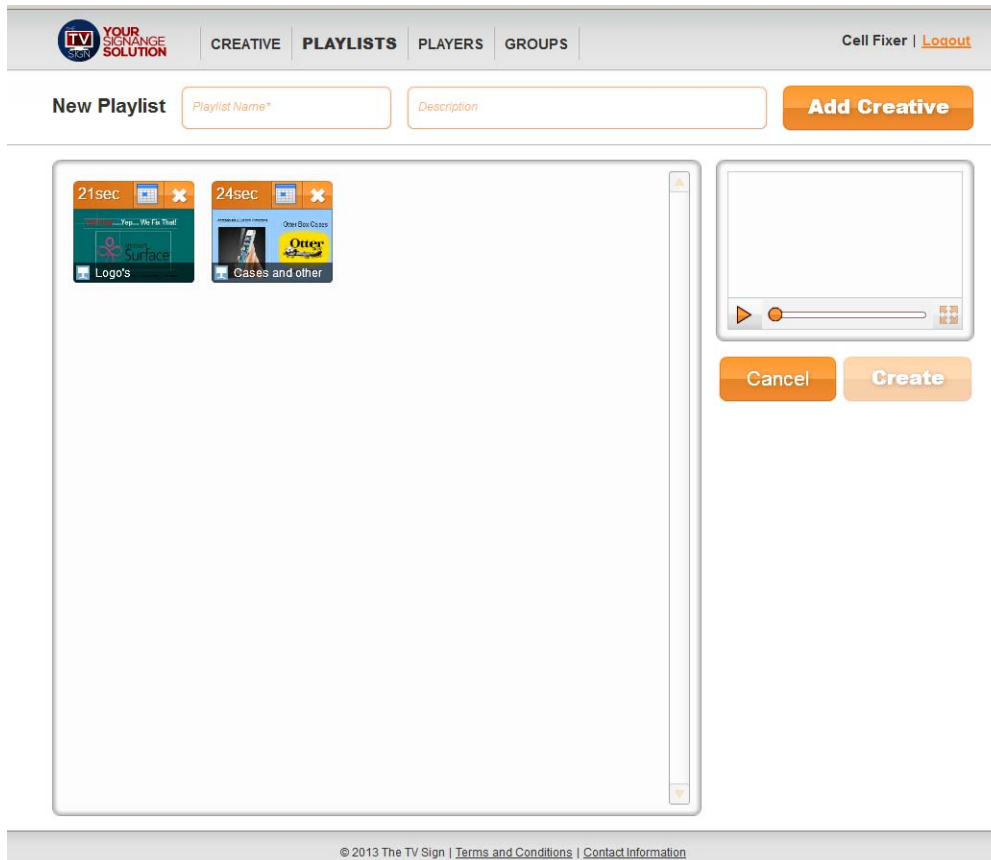
1. Go to the My Creative screen.
2. Select the images you wish to add to a playlist.



The button is activated.

Add to New Playlist

3. Click **Add to New Playlist**.



The **New Playlist** screen opens.

4. Enter a name and a description for the playlist in the boxes next to New Playlist.

- **Note:** You are now in the Playlists work area.
- You can view the playlist by clicking on the Play arrow in the small screen to the right.

5. If you wish to add another digital channel, click the  button.

6. Click the **Create** button.

Note: This button is not activated until you enter a name for the playlist.

The screenshot shows a web browser window with the URL `editor.thetvsign.com/#`. The page header includes the logo for 'TV SIGN YOUR SIGNAGE SOLUTION' and navigation tabs for 'CREATIVE', 'PLAYLISTS', 'PLAYERS', and 'GROUPS'. A user profile 'Cell Fixer' and a 'Logout' link are visible in the top right. Below the header, there is a 'My Playlists' section with an 'Add Playlist' button and three action buttons: 'Duplicate', 'Edit', and 'Delete'. The main content area features a search bar, an 'Arrange by' dropdown menu, and a grid of five playlist items. Each item is represented by a thumbnail with a title and a small image. The items are: '15S ban', '133S Current', '60S Internet', '65S No ads', and '143S Test 2'. At the bottom of the content area, it says '5 Items displayed'. The footer contains the copyright notice: '© 2013 The TV Sign | Terms and Conditions | Contact Information'.

7. The My Playlist screen opens with the new digital channel.